

Certificate of Analysis

Prepared for:

LCJ Herbal Remedies
15K Drops - Mint

Product Description: Hemp CBD Tincture - 15,000mg/100mL, CO2, MCT, Mint

Invoice Number: 2019-1504D

Lot Number: T-00220-B4

Best By Date: Jan 01, 2021

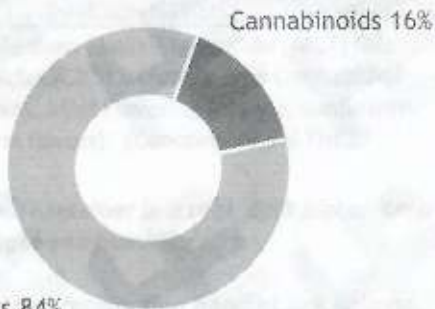
Product Code: T-15000-CO2-MCT-MT-100mL

Date of Analysis: Jan 03, 2020

Manufacture Date: Jan 02, 2020

Cannabinoid Potency - Expected CBD: 150.00 mg/mL ± 10%

% Total Cannabinoids

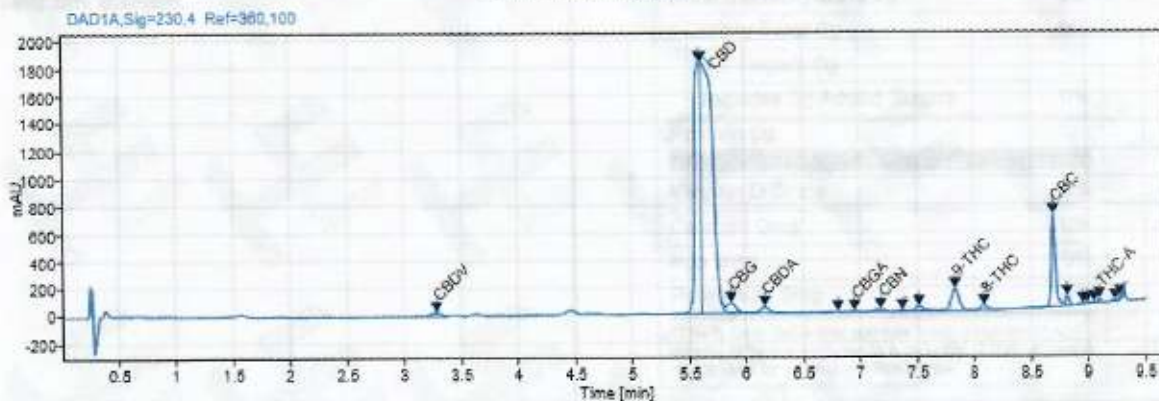


	mg/mL	%
Total CBD:	154.41 mg/mL	15.44 %
CBD:	154.17 mg/mL	15.42 %
CBDa:	0.24 mg/mL	0.02 %
d9-THC:	1.55 mg/mL	0.16 %
CBC:	1.79 mg/mL	0.18 %
CBG:	0.83 mg/mL	0.08 %
CBGa:	<0.05 mg/mL	<0.01 %
CBN:	0.06 mg/mL	0.01 %
CBDV:	0.36 mg/mL	0.04 %
d8-THC:	0.35 mg/mL	0.04 %
THCa:	<0.05 mg/mL	<0.01 %

*Total d9-THC and CBD are calculated taking into account the loss of a carboxyl group during decarboxylation.
The formulas are as follows: d9-THC = Δ9THC + (THCa * (0.877)) CBD = CBD + (CBDa * (0.877))
**Any compounds with results listed as "ND" were not detected during analysis.

Density: 0.878 (kg/m³) Specific Gravity: 0.881

Chromatogram



Approved By: S. Scarabosio
Analytical Laboratory Manager
Jan 06, 2020

S. Scarabosio



Analyzed via HPLC Under These Conditions: Humidity: 24% Temperature: 68.7°F

ISO 9001:2015 Certificate Number: US4293

Certificate of Analysis test results are based only on the analysis of the product listed in the "Product Description" of this form. Hammer Enterprises, LLC makes no claims as to the efficacy, safety, or other risks associated with any detected or non-detected compounds reported herein. All analyses conducted at Hammer Enterprises, LLC is performed on well-maintained, quality instruments utilizing Good Laboratory Practices and validated methodology. This Certificate may not be reproduced except in full, without the written approval of Hammer Enterprises, LLC. DISCLAIMER: When reviewing certificate ensure watermark is complete and intact. Watermark will present as repeating HB logos diagonally across the entire page. The authenticity of this document is not guaranteed if there is evident modification, blocking, or alterations of the watermark.