

Customer: Imbue Botanicals
 Address: 420 S McCulloch Blvd. Suite A
 Pueblo, CO 81007
 Sample ID: IC25-2202/FSD-24 25mg Capsule
 Matrix: Tincture
 Labnumber: 22D0118-03

Density (g/mL): .937

Cannabinoid Profile

Test Conditions: 19°C

Extraction Technician: SH

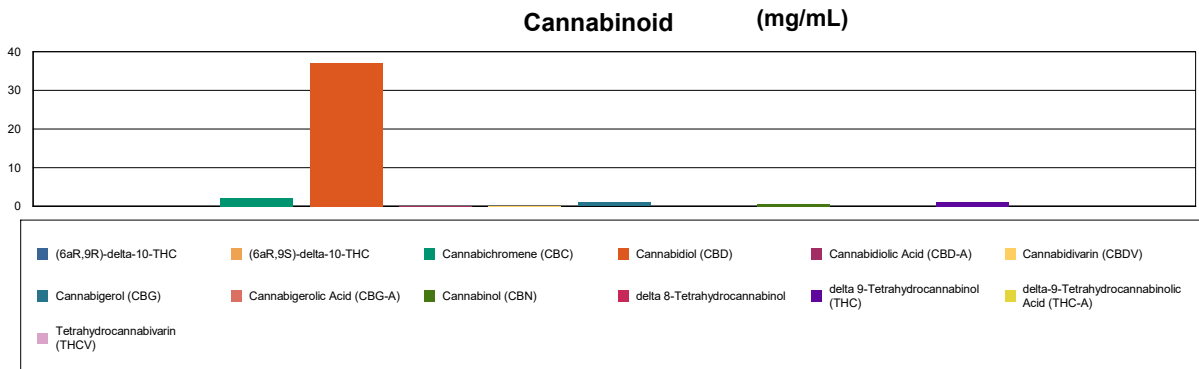
Analytical Chemist: SH

25.6 mg CBD/1 capsule - 102.40% of label claim

Extraction Date(s)	Analysis Date(s)
4/20/2022	4/20/2022

Cannabinoids (HPLC)		Results	
	LOD (mg/mL)	%	mg/mL
Cannabidiol (CBD)		3.70	37.0
Cannabinol (CBN)		0.06	0.576
Cannabidiol (CBD)		3.70	37.0
Tetrahydrocannabivarin (THCV)	<0.20		
Cannabigerol (CBG)		0.10	0.991
Cannabidiol (CBD)		3.70	37.0
Cannabichromene (CBC)		0.22	2.17
delta 9-Tetrahydrocannabinol (THC)		0.11	1.15
delta-9-Tetrahydrocannabinolic Acid (THC-A)	<0.30		
delta 8-Tetrahydrocannabinol	<0.30		
(6aR,9S)-delta-10-THC	<0.30		
(6aR,9R)-delta-10-THC	<0.30		
Cannabinoids Total		%	mg/mL
Max Active THC (delta-9-tetrahydrocannabinol)		0.12	1.15
Max Active CBD		3.72	37.15
Total Cannabinoids		4.23	42.30

Following USDA guidelines on uncertainty, Altitude Consulting's uncertainty is calculated to be +/- 2% for all cannabinoids using a coverage factor of 2 (95% confidence interval). Measurement uncertainty has not been factored into reported values. Blank results indicate the compound was below the limit of detection.



Gary Brook - Laboratory Director - 4/21/2022

Reporting Limits will vary based on sample extraction weight used for the analysis.

The results of this report are based solely on the sample submitted and cannot be reproduced. Decision Rule: Measurement uncertainty is not accounted for in the reported values.

Results are based solely on calculated numbers. Altitude Consulting makes no Statements of conformity. Pesticide, metal, and microbial analyses are subcontracted to ISO

17025 laboratories.