

## HHC Distillate

 Sample ID: SA-10262021-5064  
 Batch: 0946IHF29  
 Type: Plant / Raw Materials  
 Matrix: Concentrate - Distillate

 Collected: 10/26/2021  
 Received: 10/27/2021  
 Completed: 11/17/2021

**Client**  
 Industrial Hemp Farms  
 480 E 58th Ave  
 Denver, CO 80216  
 USA

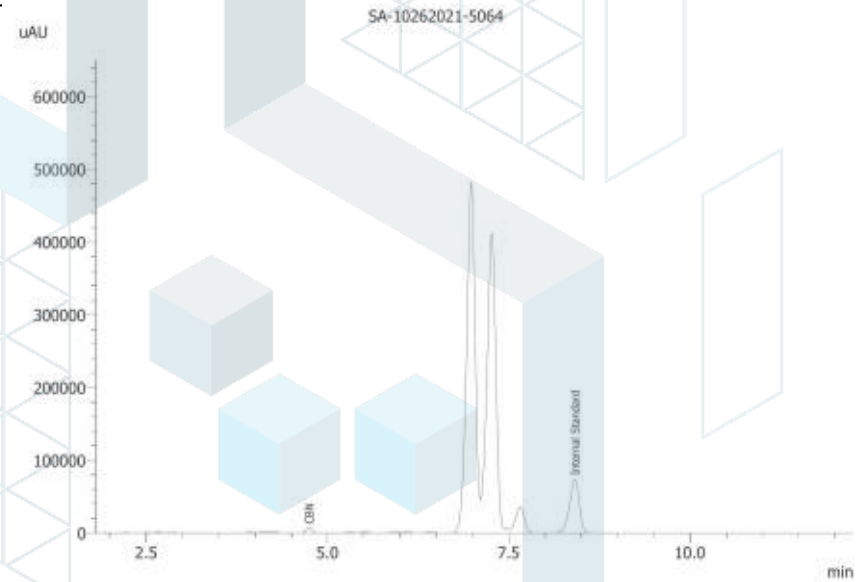

## Summary

Test	Date Tested	Status
Cannabinoids	11/17/2021	Tested
Cannabinoids (Additional)	11/17/2021	Tested

## Cannabinoids by HPLC-PDA

<b>ND</b>	<b>0.243 %</b>	<b>0.243 %</b>	<b>Not Tested</b>	<b>Not Tested</b>	<b>Yes</b>
Total Δ9-THC	CBN	Total Cannabinoids	Moisture Content	Foreign Matter	Internal Marker Recovered

Analyte	LOD (%)	LOQ (%)	Result (%)	Result (mg/g)
CBC	0.0095	0.0284	ND	ND
CBCA	0.0181	0.0543	ND	ND
CBCV	0.006	0.018	ND	ND
CBD	0.0081	0.0242	ND	ND
CBDA	0.0043	0.013	ND	ND
CBDV	0.0061	0.0182	ND	ND
CBDVA	0.0021	0.0063	ND	ND
CBG	0.0057	0.0172	ND	ND
CBGA	0.0049	0.0147	ND	ND
CBL	0.0112	0.0335	ND	ND
CBLA	0.0124	0.0371	ND	ND
CBN	0.0056	0.0169	0.243	2.43
CBNA	0.006	0.0181	ND	ND
Δ8-THC	0.0104	0.0312	ND	ND
Δ9-THC	0.0076	0.0227	ND	ND
Δ9-THCA	0.0084	0.0251	ND	ND
Δ9-THCV	0.0069	0.0206	ND	ND
Δ9-THCVA	0.0062	0.0186	ND	ND
<b>Total Δ9-THC</b>			<b>ND</b>	<b>ND</b>
<b>Total CBD</b>			<b>ND</b>	<b>ND</b>
<b>Total</b>			<b>0.243</b>	<b>2.43</b>



ND = Not Detected; NT = Not Tested; LOD = Limit of Detection; LOQ = Limit of Quantitation; RL = Reporting Limit; Δ = Delta; Total Δ9-THC = Δ9-THCA \* 0.877 + Δ9-THC; Total CBD = CBDA \* 0.877 + CBD;



11/17/2021


 ISO/IEC 17025:2017 Accredited  
 Accreditation #108651


## HHC Distillate

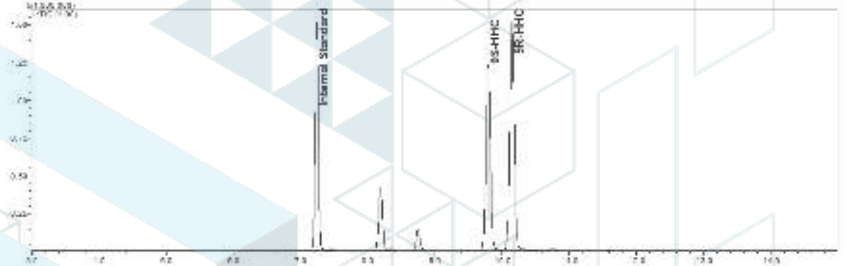
Sample ID: SA-10262021-5064  
 Batch: 0946IHF29  
 Type: Plant / Raw Materials  
 Matrix: Concentrate - Distillate

Collected: 10/26/2021  
 Received: 10/27/2021  
 Completed: 11/17/2021

**Client**  
 Industrial Hemp Farms  
 480 E 58th Ave  
 Denver, CO 80216  
 USA

## Cannabinoids by HPLC-PDA, LC-MS/MS, and/or GC-MS/MS

Analyte	LOD (%)	LOQ (%)	Result (%)	Result (mg/g)
(9R)-HHC			51.1	511.0
(9S)-HHC			49.3	493.0



ND = Not Detected; NT = Not Tested; LOD = Limit of Detection; LOQ = Limit of Quantitation; RL = Reporting Limit; Δ = Delta; Total Δ9-THC = Δ9-THCA \* 0.877 + Δ9-THC; Total CBD = CBDA \* 0.877 + CBD;



11/17/2021





License No. 800025015  
FL License # CMTL-0003  
CLIA No. 10D1094068

# Certificate of Analysis

R&D

**INDUSTRIAL HEMP FARMS**  
480 E 58TH AVENUE  
DENVER, CO 80216

Batch # 0946IHF29  
Batch Date: 2021-09-27  
Extracted From: hemp

Test Reg State: Florida

Order # IND210929-010001  
Order Date: 2021-09-29  
Sample # AABZ566

Sampling Date: 2021-09-30  
Lab Batch Date: 2021-09-30  
Completion Date: 2021-10-07

Initial Gross Weight: 71.770 g



## Residual Solvents - FL (CBD)

Specimen Weight: 107.200 mg

Passed  
(GCMS)

Dilution Factor: 50.000

Analyte	LOQ (ppm)	Action Level (ppm)	Result (ppm)	Analyte	LOQ (ppm)	Action Level (ppm)	Result (ppm)
1,1-Dichloroethene	0.16	8	<LOQ	1,2-Dichloroethane	0.04	5	<LOQ
Acetone	2.08	5000	<LOQ	Acetonitrile	1.17	410	<LOQ
Benzene	0.02	2	<LOQ	Butanes	2.5	2000	<LOQ
Chloroform	0.04	60	<LOQ	Ethanol	2.78	5000	<LOQ
Ethyl Acetate	1.11	5000	<LOQ	Ethyl Ether	1.39	5000	<LOQ
Ethylene Oxide	0.1	5	<LOQ	Heptane	1.39	5000	<LOQ
Hexane	1.17	290	<LOQ	Isopropyl alcohol	1.39	500	<LOQ
Methanol	0.69	3000	<LOQ	Methylene chloride	2.43	600	<LOQ
Perthane	2.08	5000	<LOQ	Propane	5.83	2100	<LOQ
Toluene	2.92	890	<LOQ	Total Xylenes	2.92	2170	<LOQ
Trichloroethylene	0.49	80	<LOQ				

*Xueli Gao*  
Xueli Gao  
Lab Toxicologist  
Ph.D., DABT

*Aixia Sun*  
Aixia Sun  
Lab Director/Principal Scientist  
D.H.Sc., M.Sc., B.Sc., MT (AAB)



Definitions and Abbreviations used in this report: \*Total CBD = CBD + (CBD-A \* 0.877), \*Total CBDV = CBDV + (CBDVA \* 0.87), \*Total THC = THCA-A \* 0.877 + Delta 9 THC, \*Total THCV = THCV + (THCVA \* 0.87), \*CBG Total = (CBGA \* 0.877) + CBG, \*CBN Total = (CBNA \* 0.877) + CBN, \*Total CBC = CBC + (CBCA \* 0.877), \*Other Cannabinoids Total = Total Cannabinoids - All the listed cannabinoids on the summary section, \*Total Detected Cannabinoids = Delta8-THC + Total CBN + CBT + Delta8-THCV + Total CBG + Total CBD + Total THCV + CBL + Total THC + Total CBC + Total CBDV + Delta10-THC + THCO-Acetate, \*Analyte Details above show the Dry Weight Concentrations unless specified as 12% moisture concentration. (mg/ml) = Milligrams per Milliliter, LOQ = Limit of Quantitation, LOD = Limit of Detection, Dilution = Dilution Factor (ppb) = Parts per Billion, (%) = Percent, (cfu/g) = Colony Forming Unit per Gram (cfu/g) = Colony Forming Unit per Gram, LOD = Limit of Detection, (µg/g) = Microgram per Gram (ppm) = Parts per Million, (ppm) = (µg/g), (aw) = aw (area ratio) = Area Ratio, (mg/Kg) = Milligram per Kilogram, \*Measurement of Uncertainty = +/- 5%



This report shall not be reproduced, without written approval, from ACS Laboratory. The results of this report relate only to the material or product analyzed. Test results are confidential unless explicitly waived otherwise. Accredited by a third-party accrediting body as a competent testing laboratory pursuant to ISO/IEC 17025 of the International Organization for Standardization.